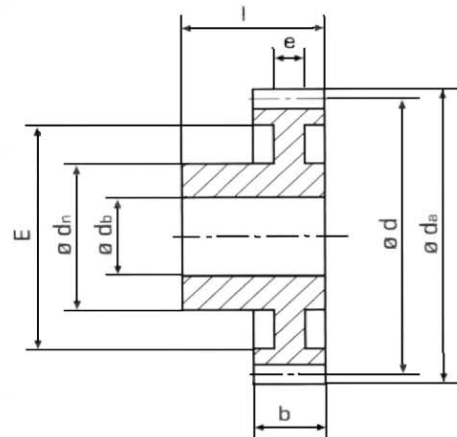


Stirnräder Kunststoff gespritzt

圆柱齿轮 注塑成型

模数 **0.5** | Modul 0,5
 直齿 | geradverzahnt
 齿形角 20° | Eingriffswinkel 20°
 聚甲醛 | Azetalharz
 [Hostaform C] | [Hostaform C]



Zähnez.										Bestell-Nr.
齿数	d_a	d	d_n	d_b	e	E	l	b	[g]	订购编号
12	7.0	6.0	4	2	-	-	7	3	0.2	119-005-012
13	7.5	6.5	4	2	-	-	7	3	0.2	119-005-013
14	8.0	7.0	5	2	-	-	7	3	0.2	119-005-014
15	8.5	7.5	6	3	-	-	10	3	0.4	119-005-015
16	9.0	8.0	6	3	-	-	10	3	0.4	119-005-016
17	9.5	8.5	6	3	-	-	10	3	0.4	119-005-017
18	10.0	9.0	8	4	-	-	10	3	0.6	119-005-018
19	10.5	9.5	8	4	-	-	10	3	0.6	119-005-019
20	11.0	10.0	8	4	-	-	10	3	0.6	119-005-020
21	11.5	10.5	8	4	-	-	10	3	0.7	119-005-021
22	12.0	11.0	10	4	-	-	10	3	1.0	119-005-022
23	12.5	11.5	10	4	-	-	10	3	1.0	119-005-023
24	13.0	12.0	10	4	-	-	10	3	1.0	119-005-024
25	13.5	12.5	10	4	-	-	10	3	1.1	119-005-025
26	14.0	13.0	10	4	-	-	10	3	1.1	119-005-026
27	14.5	13.5	10	4	-	-	10	3	1.1	119-005-027
28	15.0	14.0	10	4	-	-	10	3	1.2	119-005-028
30	16.0	15.0	12	4	-	-	10	3	1.6	119-005-030
32	17.0	16.0	12	4	-	-	10	3	1.7	119-005-032
35	18.5	17.5	12	4	-	-	10	3	1.9	119-005-035
36	19.0	18.0	12	4	-	-	10	3	1.9	119-005-036
38	20.0	19.0	12	4	-	-	10	3	2.0	119-005-038
40	21.0	20.0	12	4	2	14.5	10	3	2.0	119-005-040
42	22.0	21.0	12	4	2	16.0	10	3	2.1	119-005-042
45	23.5	22.5	12	4	2	18.5	10	3	2.2	119-005-045
48	25.0	24.0	15	6	2	19.0	10	3	3.0	119-005-048
50	26.0	25.0	15	6	2	20.0	10	3	3.0	119-005-050
52	27.0	26.0	15	6	2	21.0	10	3	3.1	119-005-052
54	28.0	27.0	15	6	2	22.0	10	3	3.2	119-005-054
55	28.5	27.5	15	6	2	23.0	10	3	3.2	119-005-055
56	29.0	28.0	15	6	2	23.0	10	3	3.4	119-005-056
60	31.0	30.0	15	6	2	24.0	10	3	3.6	119-005-060
64	33.0	32.0	15	6	2	25.0	10	3	4.1	119-005-064
65	33.5	32.5	15	6	2	27.0	10	3	4.0	119-005-065
70	36.0	35.0	15	6	2	29.0	10	3	4.4	119-005-070
72	37.0	36.0	15	6	2	30.0	10	3	4.6	119-005-072
75	38.5	37.5	15	6	2	33.0	10	3	4.7	119-005-075
80	41.0	40.0	15	6	2	36.0	10	3	5.3	119-005-080
90	46.0	45.0	15	6	2	39.0	10	3	5.6	119-005-090
96	49.0	48.0	15	6	2	42.0	10	3	7.1	119-005-096
100	51.0	50.0	15	6	2	44.0	10	3	7.4	119-005-100
120	61.0	60.0	15	6	2	54.0	10	3	10.1	119-005-120